

## Installation Guide – Mega-Retail Drivers Setup

Thank you for choosing Mega-Retail!

Refer to following steps to install Mega-Retail Drivers.

### Caution

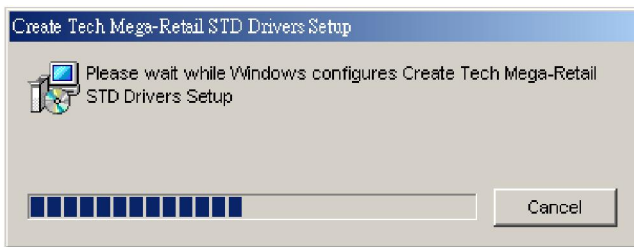
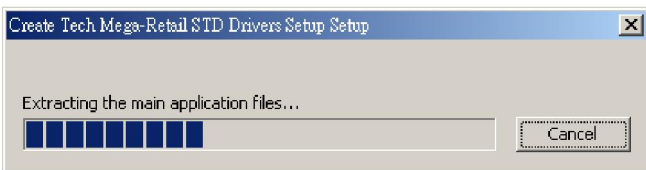
Mega-Retail Drivers Setup can be installed or removed only by a user with an administrator account.

### Installation

1. Insert the Setup CD into your computer's CD-ROM driver.

2. Browse the CD and run **Mega-Retail\_std\_setup.exe** 

3. The following screens appear <sup>(1)</sup>.



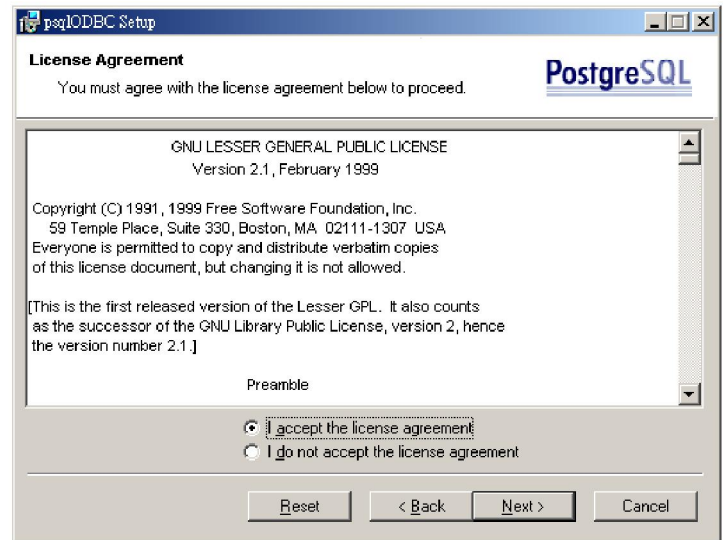
(1): if you cannot see these screens, follow step A in “Exceptional cases” section.

4. Wait until you see the following screen <sup>(2)</sup>, click “**N**ext”.

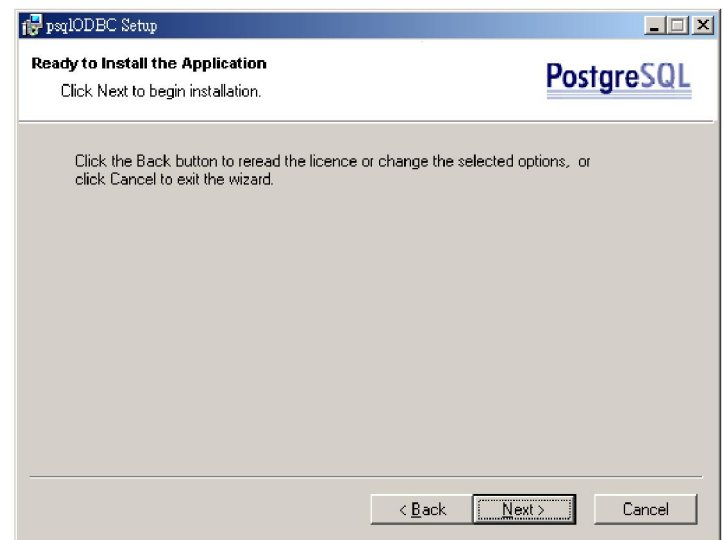


(2): You may see another screen instead, if so, follow step B1 to B3 in “Exceptional cases” section.

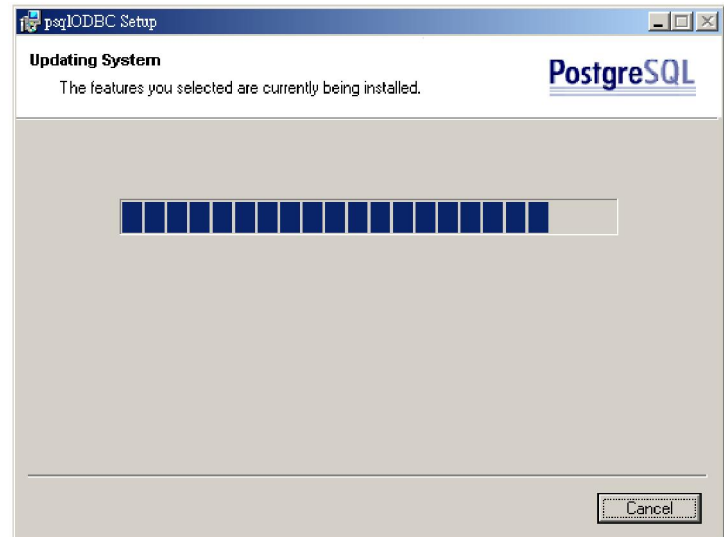
5. The following screen appears, read the license and choose “**I accept the license agreement**” if you accept, then click the “**N**ext” button.



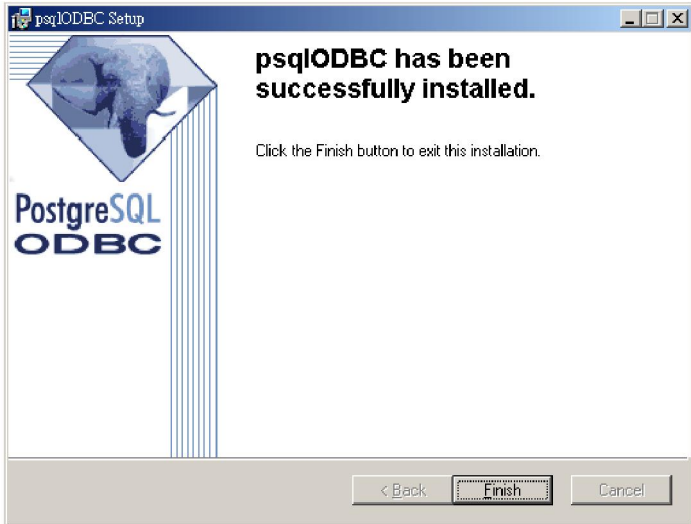
6. click the “**N**ext” to process.



7. Wait until finished.



8. Click the “**Finish**” button to complete the installation.



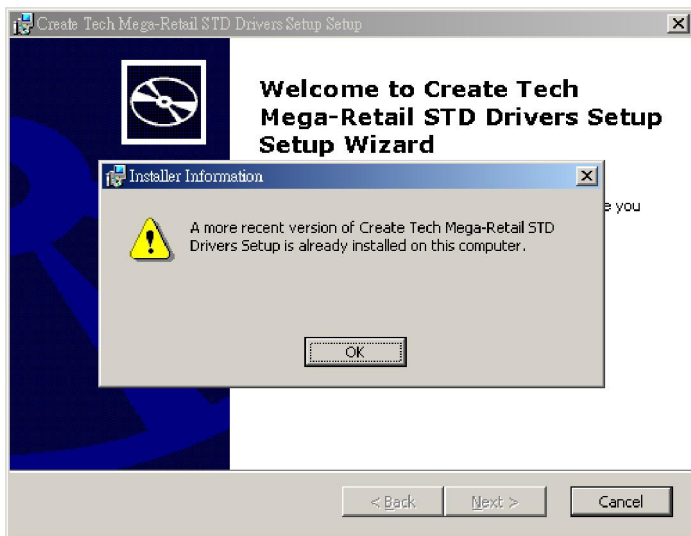
9. Finally, copy 2 files – “mega-retail.ini” & “drowsap.dat” from the setup CD to the folder C:\CTS\Mega-Retail\

10. Click the icon “CTS Mega-Retail” on desktop to start.

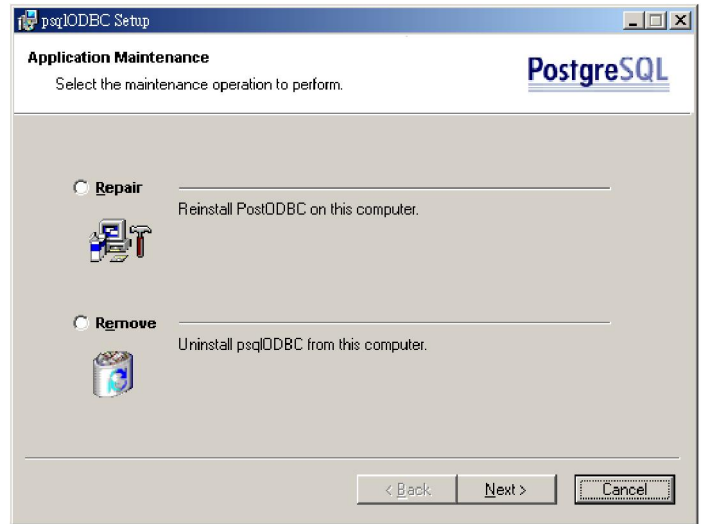


### Exceptional cases

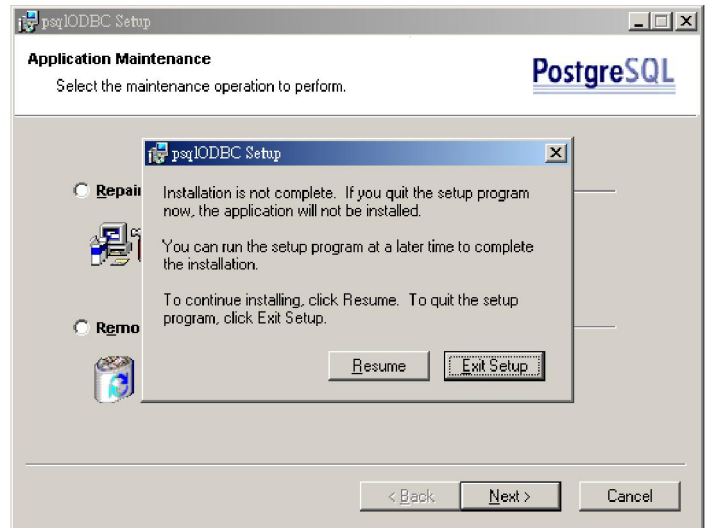
A. If you see the following screen after clicking Mega-Retail\_std\_setup.exe, that means you have already installed Mega-Retail drivers, click the “**OK**” button followed by the “**Finish**” button to exit.



B1. If you see the following screen, click the “**Cancel**” button.



B2. Click the “**Exit Setup**” button.



B3. Click “**OK**” to exit.

